

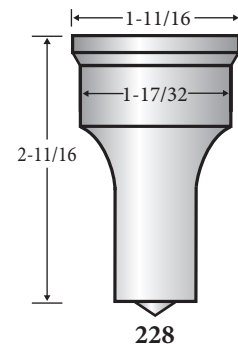
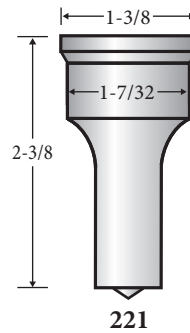
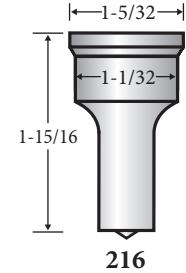
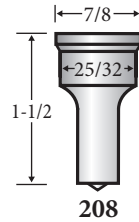


Hill-Acme™ /Kling™ Ironworkers

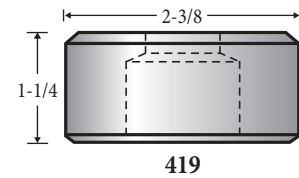
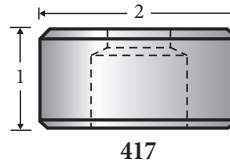
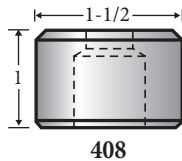
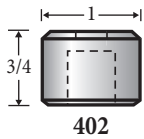
Model	Punch	Die
#3	216	402
#3 Combination	208	402
#30	216	402
#3A	221	402
#4	221	402
#4 Combination	221	402
#4A	221	402
#5	221	402
#50	221	402
#6	221	402
#6A	221	402
#7	228	408
#7 Combination	228	408
#7A	228	408
MW30	216	402
MW50	221	402

Note: Hill-Acme™/Kling™ Ironworkers use Die Style 408, 417, or 419 for Oversize Hole Punching.

PUNCHES



DIES



SHEAR BLADES

We manufacture Shear Blades for all types of Ironworkers and can custom manufacture to your specifications.



Hill-Acme™ /Kling™