

Custom Tooling

Let Us Help You Solve Your Problem

Cleveland Steel Tool specializes in custom solutions to your punching problems. If you need special tooling, special sizes, or a custom die set our sales engineers can design the solution for your unique environment. See the examples below:

A customer in the conveyor industry needed to crimp “ears” onto a spindle for a conveyor.

A Special crimping punch and die quickly creates repeatable crimps.



An automotive industry customer wanted to emboss their brand name onto their finished assemblies.

A punch and die set with a raised logo and then recessed mirror image allows rapid embossing of the brand name.



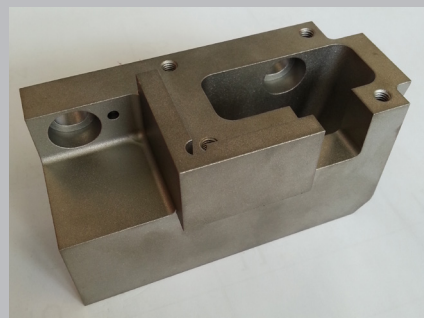
A builder of steel frame structures needed to flatten and trim the ends of pipe, and punch a bolt hole to attach sections.

In two strokes the die set cuts the radius, crimps the end, and punches the hole.



A leaf spring manufacturer needed to upgrade and replace their aging die holder.

The original die block was reverse engineered, new attachment and retention points were added and the die block was replaced.





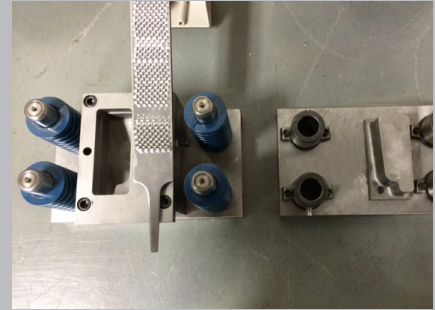
Custom Tooling

Improve Productivity with a Custom Die Set

A die set is often used to combine two or three operations into one, reducing cycle and setup times, and improving repeatability. In addition to the examples shown, we offer picket tools for fence pickets, corner rounding tools, pipe notching die sets and much more. Call us, or send us your part, and we'll create an efficient solution.

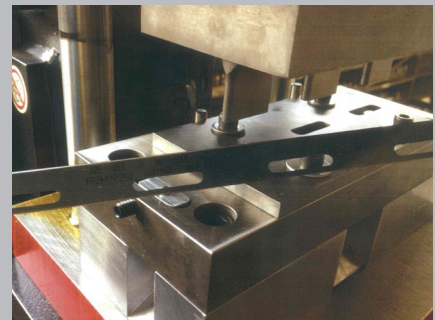
A manufacturer of files needed to form the tang (handle) using less machining time.

In a single stroke, the die set punches out the handle completely to size.



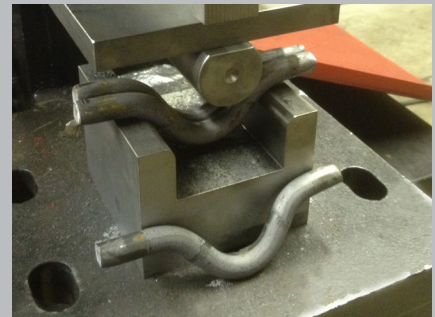
A packaging equipment manufacturer wanted to streamline the manufacture of blades for cutting poly bags.

The triple oblong die set puts three holes at once into 20 gauge spring steel to form the mounting holes for the cutting blades.



A supplier to the sporting goods industry needed to build retaining brackets for a boxing ring.

CST engineers created a double bar bend attachment to make consistent, repeatable bends and streamline production.



An equipment manufacturer sought to minimize handling and reduce the time needed to put the four mounting holes into the baseplate of their machine.

With the four hole punch die set, the square plate is always properly aligned and the four holes are punched in one stroke and always with the perfect spacing.

