

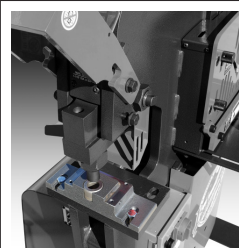
# 55 Ton Ironworker

Technical Specifications	
<b>Rated capacity</b> <small>**Rated at 65,000 psi tensile strength</small>	55 Ton
<b>Number of work stations</b>	4
<b>Throat depth</b>	7-1/2"
<b>Maximum capacity</b>	1-1/16" dia. thru 5/8" plate
<b>Largest standard punch</b>	1-1/16" punch
<b>Open height</b>	8-1/8"
<b>Closed height</b>	6-7/8"
<b>Stroke</b>	1-1/4"
<b>Table size</b>	6" x 10"
<b>Hydraulic system</b>	7 gallon reservoir 2,500 PSI, 2-1/2" cylinder
<b>Standard motor</b>	5 HP, 3 phase 208V or 230V - 14amp
<b>Optional motors</b>	5 HP, 3 Phase, 460V - 7 amp 5 HP, 3 Phase, 575V - 6 amp 5 HP, 1 Phase, 208 or 230V - 23 amp
<b>Dimensions</b>	Base 44-3/8" W x 36-1/8" D x 55-1/4" H
<b>Shipping Weight</b>	2,480 lbs.



## STANDARD FEATURES

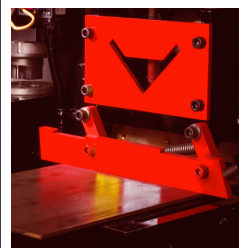
- Fully guarded
- Gauge table
- Adjustable steel strippers
- Fully charged hydraulic system
- Electric stroke control
- Shear blades reversible for extra long life
- Direct drive pump
- Open station for optional tooling



Punch Station with  
pedestal die table  
219 Punch and 413 Die



Angle Shear  
3" x 3" x 3/8"  
4" x 4" x 1/4"  
mild Steel



Flat Bar Shear  
3/8" x 14"  
1/2" x 12"  
3/4" x 4"  
mild Steel

# Ironworker Accessories

## PUNCH • SHEAR • COPE • NOTCH • BEND

### Toolpack-1



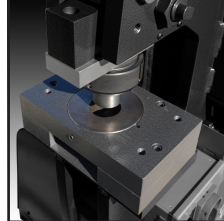
14 sets of 219 punches and 413 dies  
1/4" to 1-1/16" in 1/16" increments

### Toolpack-2



8 sets of 228 punches and 419 dies

### Oversized Punching Attachments



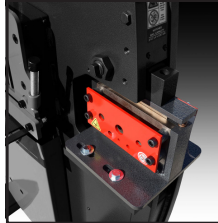
**Oversized attachment**  
up to 1-1/2" round  
**Oversized attachment (shown)**  
up to 4" round

### Magnetic Accessory Light



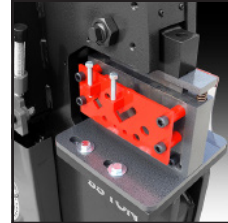
Connects to the Ironworker to provide task lighting

### Rod Shear



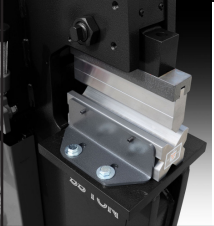
Reduce deformation in 1/4" to 1" mild steel rod

### Multi-Shear



Combined Flat Bar, Angle, and Rod Shear for mild steel

### Press Brake



Controlled, repeatable bends in 1/4" thick mild steel

### Pipe Notcher Housing



Notch Up to 2" Schedule 40 pipe (requires dies)

### Pipe Notcher Dies



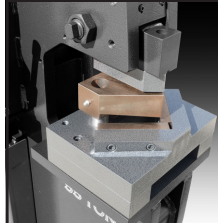
Standard dies sizes up to 2" Schedule 40 pipe

### Turret Pipe Notcher Housing



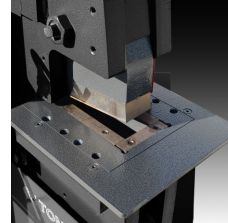
Load 3 different pipe notcher dies at once and quickly switch from one size to the next Up to 2" Schedule 40 pipe (requires dies)

### Angle Notcher



Precise 92° Notch in 1/4" mild steel

### Coper Notcher



Precisely notch plate or angle up to 2" mild steel

### Auto Cut



Adjustable proximity switch automates production when cutting repeatable lengths

### Custom Tooling



We can manufacture your custom tool, whether it's a modification to a stock punch or a custom die set.



Scan to view our Ironworkers on our website

All of our ironworkers feature multiple workstations, allowing you to outfit your machine with a variety of optional attachments. This enables you to go from one operation to another without time-consuming tooling changes.