

# ST CLEVELAND STEEL TOOL

## SPECIFICATIONS

Rated capacity 75 Ton

\*\*Rated at 65,000 psi tensile strength

Number of workstations 4

Throat depth 10"

Maximum capacity 1-1/16" dia. thru 7/8" plate

Largest standard size 1 1/16" punch  
1-1/4" die

Open height 8-3/4"

Shut height 6-7/8"

Stroke 1-7/8"

Table size 6" x 10"

Hydraulic System Reservoir: 17 gallons  
2,800 PSI, cylinder; 3-1/2" ram

Standard Motor 7.5 HP, 3 phase 208/240V - 21 amp

Optional Motor 7.5 HP, 3 phase 440V - 13 amp  
5 HP, 1 phase, 208/240V - 26 amp

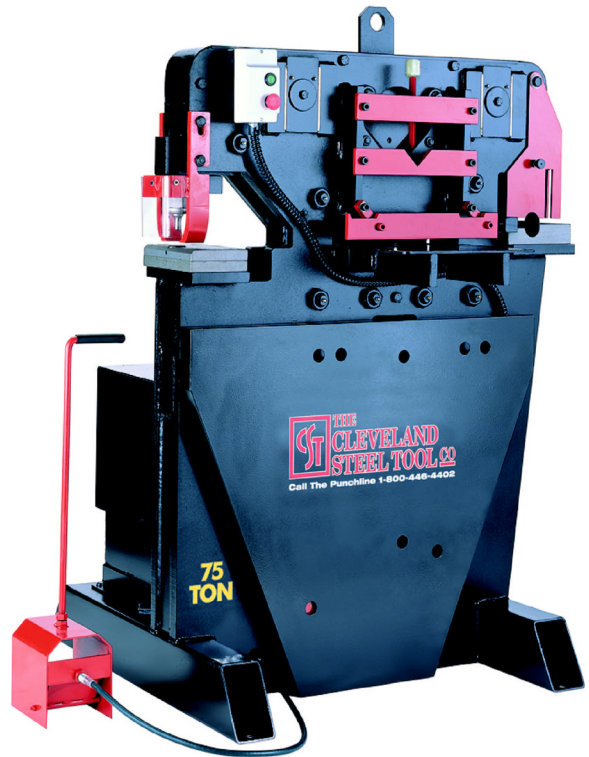
### Dimensions

Base 38" x 44"

Height 60"

Weight 3,300 lbs.

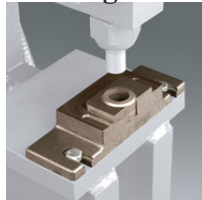
# 75 Ton Ironworker



## STANDARD FEATURES

- Fully guarded
- Adjustable steel strippers
- Integral lifting lug for instant portability
- Hydraulic system charged and ready to operate
- Fast adjusting hold down bars
- Gauge table

### Punching Station Angle Shear



219 Punch  
413 Die



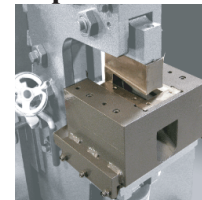
5" x 5" x 3/8"  
4" x 4" x 3/8"

### Bar Shear



Rounds/Squares 1-1/8"  
Flat Bar 3/4" x 10" or  
1/2" x 14"

### Coper Notcher

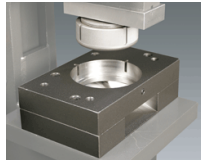


2-1/2" x 5" X 1/2" mild steel

- Direct drive pump
- Shear blades reversible for extra long life
- Low rake angle on shear blades
- Remote foot pedal operations
- Comfortable operating height
- Electric Stroke Control
- Pedestal Die Table

## OPTIONAL ATTACHMENTS

### Oversize Punching



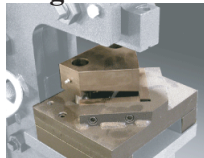
228 Punch-419 Die  
sizes up to  
1-1/2" rd thru 5/8" thick mild steel  
241 Punch-28XX Die  
(shown)  
sizes up to 3-1/2" rd  
thru 1/4" mild steel

### Brake



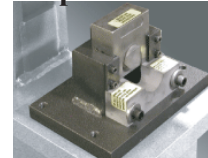
8", 10" or 12"  
wide  
1/4" mild steel

### Angle Notcher



3" x 3" X 1/4"  
mild steel

### Pipe Notcher



Up to 2" OD  
(Schedule 40 pipe)

### Rod Shear



Up to 1-1/8"  
Square and hex  
available

# ST CLEVELAND STEEL TOOL

474 East 105th Street • Cleveland, Ohio 44108 USA

(216) 681-7400 • Fax (216) 681-7009

www.clevelandsteeltool.com

**800-446-4402**