

# THE CLEVELAND STEEL TOOL

## SPECIFICATIONS

Rated capacity 120 Ton

\*\*Rated at 65,000 psi tensile strength

Number of workstations 5

Throat depth 11"

Maximum capacity 1-1/2" dia. thru 1" plate

Largest standard size 1 1/16" punch

1-1/8" die

Open height 9-1/8"

Shut height 7"

Stroke 2-1/2"

Table size 6" x 10"

Hydraulic System Reservoir: 17 gallons

4,500 PSI, cylinder; 2-3/4" ram

Standard Motor 10 HP, 3 phase 208/240V - 26 amp

Optional Motor 10 HP, 3 phase 440V - 13 amp

10 HP, 1 phase 230V - 40 amp

Dimensions

Base 60" x 60"

Height 84"

Weight 5,500 lbs.

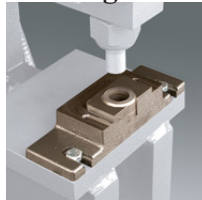
# 120 Ton Ironworker



## STANDARD FEATURES

- Fully guarded
- Adjustable steel strippers
- Integral lifting lug for instant portability
- Hydraulic system charged and ready to operate
- Fast adjusting hold down bars
- Gauge table

### Punching Station Angle Shear



219 Punch  
413 Die



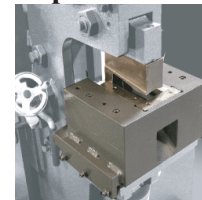
6" x 6" x 1/2"

### Bar Shear



Rounds/Squares 1-1/4"  
Flat Bar 1/2" x 24" or  
1" x 12"

### Coper Notcher

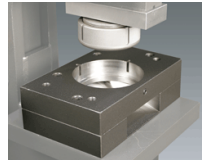


3" x 6" X 1/2" mild steel

- Direct drive pump
- Shear blades reversible for extra long life
- Low rake angle on shear blades
- Remote foot pedal operations
- Comfortable operating height
- Electric Stroke Control
- Pedestal Die Table

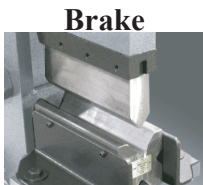
## OPTIONAL ATTACHMENTS

### Oversize Punching

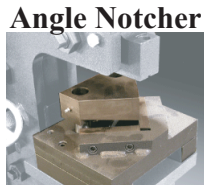


**228 Punch-419 Die**  
sizes up to  
1-1/2" rd thru 1" thick mild steel

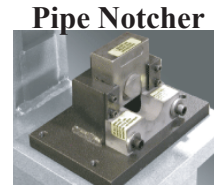
**241 Punch-28XX Die**  
(shown)  
sizes up to 3-1/2" rd  
thru 3/8" mild steel



**Brake**  
10" wide  
1/4" mild steel  
for punch station or  
open cavity



**Angle Notcher**  
3" x 3" X 1/4"  
mild steel



**Pipe Notcher**  
Up to 2" OD  
(Schedule 40 pipe)



**Rod Shear**  
Up to 1-1/4" round  
Square and hex available

# THE CLEVELAND STEEL TOOL

474 East 105th Street • Cleveland, Ohio 44108 USA

(216) 681-7400 • Fax (216) 681-7009

www.clevelandsteeltool.com

**800-446-4402**