

CLEVELAND STEEL TOOL

SPECIFICATIONS

Rated capacity 100 Ton

**Rated at 65,000 psi tensile strength

Number of workstations 5

Throat depth 10"

Maximum capacity 1-¹/₁₆" dia. thru 1" plate

Largest standard size 1-¹/₁₆" punch
1-¹/₄" die

Open height 8-¹/₂"

Shut height 7"

Stroke 1-³/₈"

Table size 6" x 10"

Hydraulic System Reservoir: 17 gallons
3,600 PSI, cylinder; 2-¹/₂" ram

Standard Motor 10 HP, 3 phase 208/240V - 26 amp

Optional Motor 10 HP, 3 phase 440V - 13 amp

Dimensions

Base 43" x 44"

Height 62"

Weight 4,850 lbs.

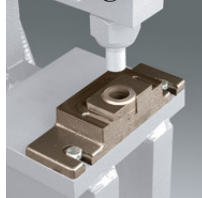
100 Ton Deluxe Ironworker



STANDARD FEATURES

- Fully guarded
- Adjustable steel strippers
- Integral lifting lug for instant portability
- Hydraulic system charged and ready to operate
- Fast adjusting hold down bars
- Gauge table

Punching Station Angle Shear



219 Punch
413 Die



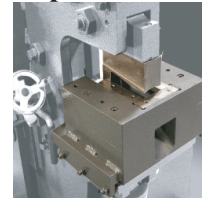
5" x 5" x 1/2"

Bar Shear



Rounds/Squares 1"
Flat Bar 1/2" x 16" or
1" x 6"

Coper Notcher

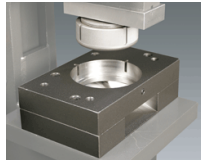


3" x 5" X 1/2" mild steel

- Direct drive pump
- Shear blades reversible for extra long life
- Low rake angle on shear blades
- Remote foot pedal operations
- Comfortable operating height
- Electric Stroke Control
- Pedestal Die Table

OPTIONAL ATTACHMENTS

Oversize Punching



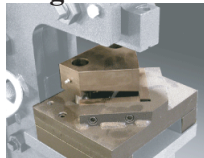
228 Punch-419 Die
sizes up to
1-¹/₂" rd thru 5/8" thick mild steel
241 Punch-28XX Die
(shown)
sizes up to 3-¹/₂" rd
thru 5/16" mild steel

Brake



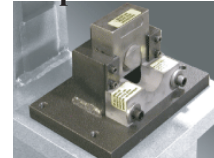
8" or 10" wide
1/4" mild steel

Angle Notcher



3" x 3" X 1/4"
mild steel

Pipe Notcher



Up to 2" OD
(Schedule 40 pipe)

Rod Shear



Up to 1-¹/₂" round
Up to 1-¹/₄" square

CLEVELAND STEEL TOOL

474 East 105th Street • Cleveland, Ohio 44108 USA

(216) 681-7400 • Fax (216) 681-7009

www.clevelandsteeltool.com

800-446-4402