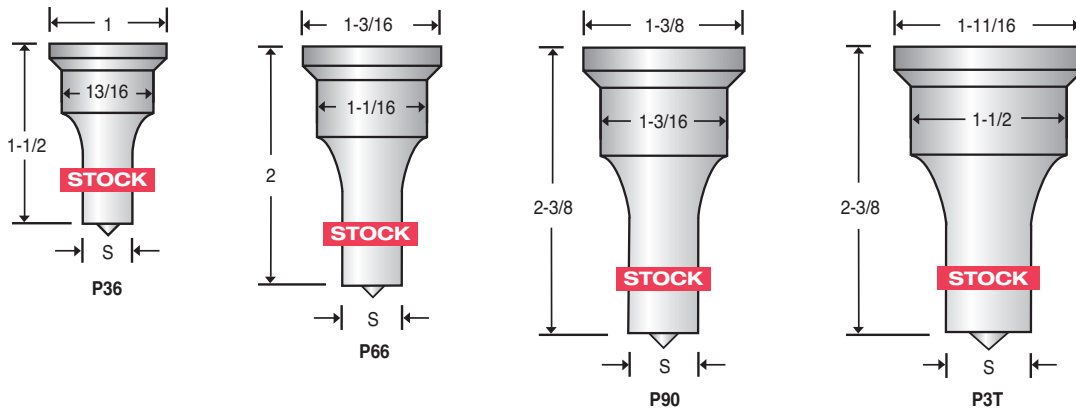


All stock items are available for **immediate shipment.**

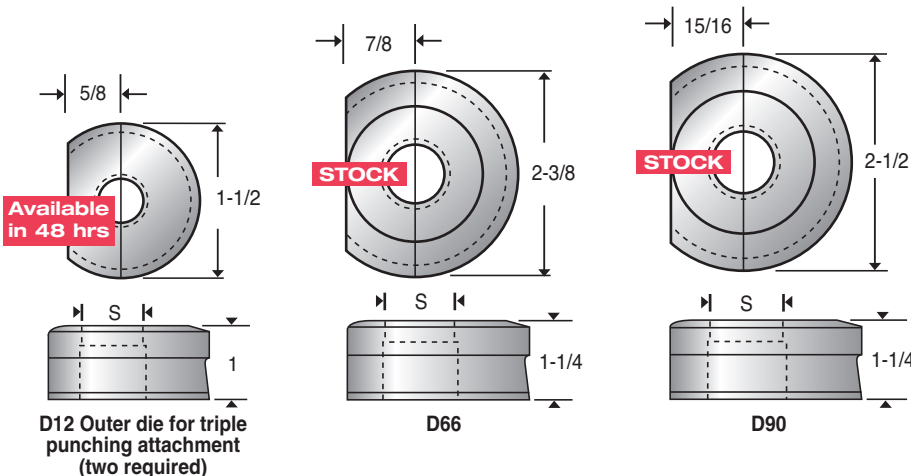
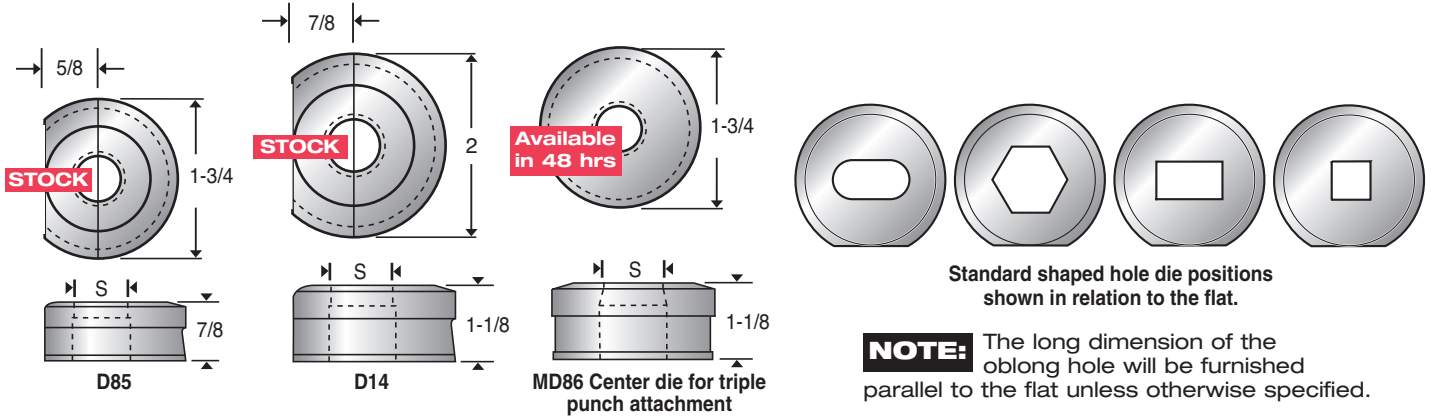
Non-stock sizes of a round, oblong, square, hexagonal and rectangular shape of standard tooling will be **shipped within 48 hours.**

Model	Uses Punch	Uses Die
0	P36	D85
1/2	P66	D14
1-1/2	P66	D66
2-1/2 pre 1952	P90	D90
2-1/2 after 1952	P3T	D90

Punches



Dies



Stock Punch Sizes



Stock Round Punches

SIZE	P36	P66	P90	P3T
1/8	●	●	●	
5/32	●	●	●	●
3/16	●	●	●	●
7/32	●	●	●	●
1/4	●	●	●	●
9/32	●	●	●	●
5/16	●	●	●	●
11/32	●	●	●	●
3/8	●	●	●	●
13/32	●	●	●	●
7/16	●	●	●	●
15/32	●	●	●	●
1/2	●	●	●	●
17/32	●	●	●	●
9/16	●	●	●	●
19/32	●	●	●	●
5/8	●	●	●	●
21/32	●	●	●	●
11/16	●	●	●	●
23/32	●	●	●	●
3/4	●	●	●	●
25/32	●	●	●	●
13/16	●	●	●	●
27/32	●	●	●	●
7/8	●	●	●	●
29/32	●	●	●	●
15/16	●	●	●	●
31/32	●	●	●	●
1	●	●	●	●
1-1/32	●	●	●	●
1-1/16	●	●	●	●
1-3/32	●	●	●	●
1-1/8	●	●	●	●
1-5/32		●	●	●
1-3/16		●	●	●
1-1/4		●	●	●
1-5/16		●	●	●
1-3/8		●	●	●
1-7/16		●	●	●
1-1/2		●	●	●



Stock Oblong Punches

SIZE	P36	P66	P90	P3T
3/16 x 1		●	●	
7/32 x 1		●	●	
1/4 x 1/2		●	●	
1/4 x 1		●	●	
9/32 x 9/16		●	●	
9/32 x 1		●	●	
5/16 x 5/8		●	●	
5/16 x 3/4	●	●	●	
5/16 x 1		●	●	
11/32 x 11/16		●	●	
11/32 x 1		●	●	
3/8 x 1/2		●	●	
3/8 x 3/4	●	●	●	
3/8 x 1		●	●	
13/32 x 13/16		●	●	
13/32 x 1		●	●	
7/16 x 9/16		●	●	
7/16 x 3/4		●	●	●
7/16 x 13/16	●			
7/16 x 7/8			●	●
7/16 x 1		●	●	●
7/16 x 1-1/4			●	●
7/16 x 1-1/2			●	●
15/32 x 1		●	●	●
1/2 x 3/4		●	●	
1/2 x 1		●	●	●
1/2 x 1-1/4			●	●
1/2 x 1-1/2			●	●
17/32 x 1		●	●	
17/32 x 1-1/4			●	●
17/32 x 1-1/2			●	●
9/16 x 3/4		●	●	
9/16 x 13/16	●			
9/16 x 1		●	●	
9/16 x 1-1/16			●	●
9/16 x 1-1/4			●	●
9/16 x 1-1/2			●	●
5/8 x 1		●	●	●
5/8 x 1-1/4			●	●
5/8 x 1-1/2			●	●



Stock Oblong Punches (cont)

SIZE	P36	P66	P90	P3T
11/16 x 1			●	●
11/16 x 1-1/16		●		
11/16 x 1-1/4				●
11/16 x 1-1/2				●
3/4 x 1		●	●	●
3/4 x 1-1/4				●
3/4 x 1-1/2				●
13/16 x 1			●	●
13/16 x 1-1/16	●			
13/16 x 1-3/16				●
13/16 x 1-1/4				●
13/16 x 1-1/2				●
7/8 x 1				●
7/8 x 1-1/4				●
7/8 x 1-1/2				●
15/16 x 1-1/4			●	●
15/16 x 1-1/2				●
1 x 1-1/4				●
1 x 1-1/2				●
1-1/16 x 1-1/2				●



Stock Square Punches

SIZE	P36	P66	P90	P3T
1/4	■	■	■	
9/32	■	■	■	
5/16	■	■	■	
11/32	■	■	■	
3/8	■	■	■	
13/32	■	■	■	
7/16	■	■	■	
15/32	■	■	■	
1/2	■	■	■	
17/32	■	■	■	
9/16	■	■	■	
19/32		■	■	
5/8		■	■	
21/32		■	■	
11/16		■	■	
23/32		■	■	
3/4		■	■	
25/32		■	■	
13/16		■	■	
27/32			■	
7/8			■	

All stock items are available for **immediate shipment.**

Non-stock sizes of a round, oblong, square, hexagonal and rectangular shape of standard tooling will be **shipped within 48 hours.**

All stock items are available for **immediate shipment.**

Non-stock sizes of a round, oblong, square, hexagonal and rectangular shape of standard tooling will be **shipped within 48 hours.**

▶ Model	Uses Punch	Uses Die
0	P36	D85
1/2	P66	D14
1-1/2	P66	D66
2-1/2 pre 1952	P90	D90
2-1/2 after 1952	P3T	D90

Stock Die Sizes



Stock Round Dies

SIZE	D85	D14	D66	D90
5/32	●	●	●	●
3/16	●	●	●	●
7/32	●	●	●	●
1/4	●	●	●	●
9/32	●	●	●	●
5/16	●	●	●	●
11/32	●	●	●	●
3/8	●	●	●	●
13/32	●	●	●	●
7/16	●	●	●	●
15/32	●	●	●	●
1/2	●	●	●	●
17/32	●	●	●	●
9/16	●	●	●	●
19/32	●	●	●	●
5/8	●	●	●	●
21/32	●	●	●	●
11/16	●	●	●	●
23/32	●	●	●	●
3/4	●	●	●	●
25/32	●	●	●	●
13/16	●	●	●	●
27/32	●	●	●	●
7/8	●	●	●	●
29/32	●	●	●	●
15/16	●	●	●	●
31/32	●	●	●	●
1	●	●	●	●
1-1/32	●	●	●	●
1-1/16	●	●	●	●
1-3/32	●	●	●	●
1-1/8	●	●	●	●
1-5/32	●	●	●	●
1-3/16	●	●	●	●
1-7/32	●	●	●	●
1-1/4	●	●	●	●
1-9/32	●	●	●	●
1-5/16	●	●	●	●
1-11/32	●	●	●	●
1-3/8	●	●	●	●
1-13/32	●	●	●	●
1-7/16	●	●	●	●
1-15/32	●	●	●	●
1-1/2	●	●	●	●
1-17/32	●	●	●	●
1-9/16	●	●	●	●



Stock Oblong Dies

SIZE	D85	D14	D66	D90
7/32 x 1-1/32		●	●	
1/4 x 1-1/32		●	●	
9/32 x 17/32		●	●	●
9/32 x 1-1/32		●	●	●
5/16 x 19/32		●	●	●
5/16 x 1-1/32		●	●	●
11/32 x 21/32		●	●	●
11/32 x 25/32		●	●	●
11/32 x 1-1/32	●	●	●	●
3/8 x 23/32		●	●	●
3/8 x 1-1/32		●	●	●
13/32 x 17/32		●	●	●
13/32 x 25/32		●	●	●
13/32 x 1-1/32	●	●	●	●
7/16 x 27/32		●	●	●
7/16 x 1-1/32		●	●	●
15/32 x 19/32		●	●	●
15/32 x 25/32		●	●	●
15/32 x 27/32		●	●	●
15/32 x 29/32	●	●	●	●
15/32 x 1-1/32		●	●	●
15/32 x 1-9/32		●	●	●
15/32 x 1-17/32		●	●	●
1/2 x 1-1/32		●	●	●
17/32 x 25/32		●	●	●
17/32 x 1-1/32		●	●	●
17/32 x 1-9/32		●	●	●
17/32 x 1-17/32		●	●	●
9/16 x 1-1/32		●	●	●
9/16 x 1-9/32		●	●	●
9/16 x 1-17/32		●	●	●
19/32 x 25/32		●	●	●
19/32 x 27/32		●	●	●
19/32 x 1-1/32	●	●	●	●
19/32 x 1-3/32		●	●	●
19/32 x 1-9/32		●	●	●
19/32 x 1-17/32		●	●	●
5/8 x 1-1/16		●	●	●
5/8 x 1-5/16		●	●	●
5/8 x 1-9/16		●	●	●
21/32 x 1-1/32		●	●	●
21/32 x 1-9/32		●	●	●
21/32 x 1-17/32		●	●	●
11/16 x 1-1/16		●	●	●
11/16 x 1-5/16		●	●	●
11/16 x 1-9/16		●	●	●
23/32 x 1-1/32		●	●	●
23/32 x 1-3/32		●	●	●
23/32 x 1-9/32		●	●	●
23/32 x 1-17/32		●	●	●

Stock Oblong Dies (cont)

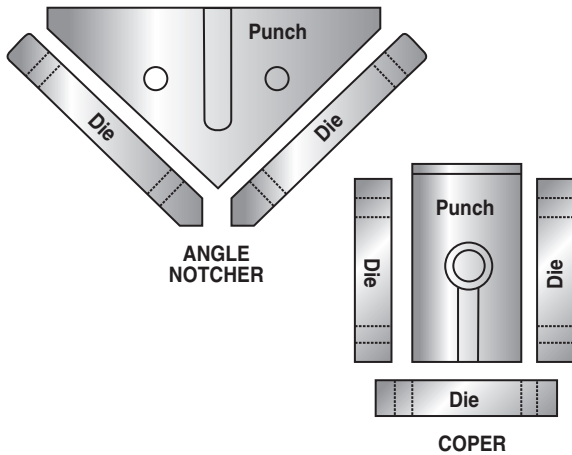
SIZE	D85	D14	D66	D90
3/4 x 1-1/16			●	●
3/4 x 1-5/16			●	●
3/4 x 1-9/16			●	●
25/32 x 1-1/32		●	●	●
13/16 x 1-1/16			●	●
13/16 x 1-5/16			●	●
13/16 x 1-9/16			●	●
27/32 x 1-1/32		●	●	●
27/32 x 1-3/32		●	●	●
27/32 x 1-9/32			●	●
27/32 x 1-17/32			●	●
7/8 x 1-1/16		●	●	●
7/8 x 1-1/4			●	●
7/8 x 1-5/16			●	●
7/8 x 1-9/16			●	●
29/32 x 1-1/32			●	●
15/16 x 1-1/16			●	●
15/16 x 1-5/16			●	●
15/16 x 1-9/16			●	●
31/32 x 1-9/32			●	●
31/32 x 1-17/32			●	●
1 x 1-5/16			●	●
1 x 1-9/16			●	●
1-1/16 x 1-5/16			●	●
1-1/16 x 1-9/16			●	●
1-1/8 x 1-9/16			●	●



Stock Square Dies

SIZE	D85	D14	D66	D90
9/32	■	■	■	
5/16	■	■	■	
11/32	■	■	■	■
3/8	■	■	■	■
13/32	■	■	■	■
7/16	■	■	■	■
15/32	■	■	■	■
1/2	■	■	■	■
17/32	■	■	■	■
9/16	■	■	■	■
19/32	■	■	■	■
5/8	■	■	■	■
21/32	■	■	■	■
11/16	■	■	■	■
23/32	■	■	■	■
3/4	■	■	■	■
25/32	■	■	■	■
13/16	■	■	■	■
27/32	■	■	■	■
7/8	■	■	■	■

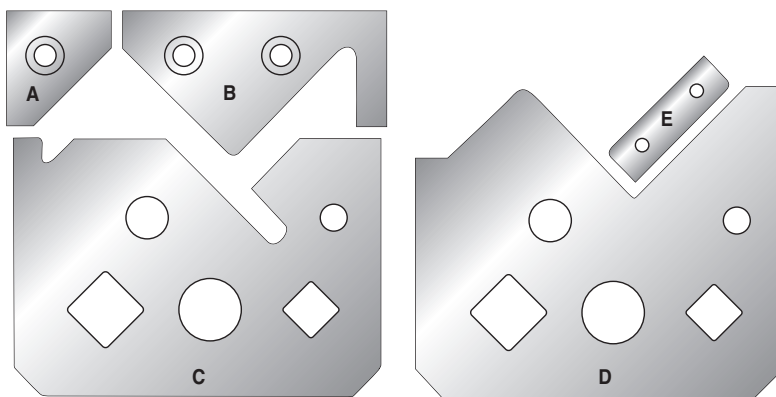
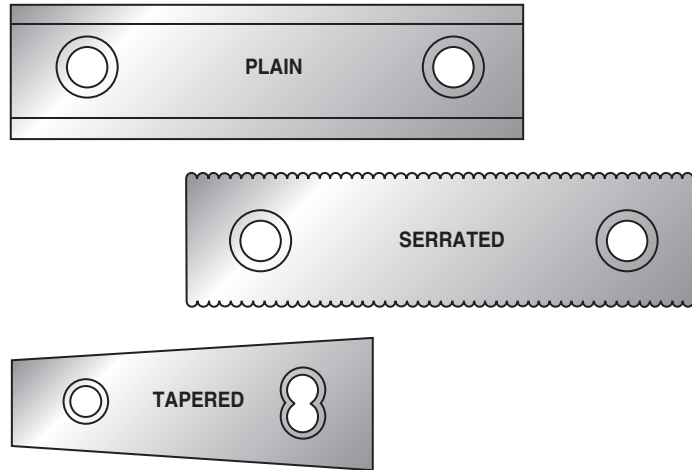
Standard Notcher Tools, Coper Tools, Shear Blades, and Barcutter Blades



MODEL	NOTCHER PUNCH PART #	NOTCHER DIE PART #	COPER PUNCH PART #	COPER DIE PART #
1/2 pre 1963	1-2NP1	1-2ND0	1-2CP3	(2) 1-2CDB (1) 1-2CD1
1/2 after 1963	1-2NP1	1-2ND0	1-2CP4	(3) 1-2CD3
1-1/2 pre 1963	1-2NP1	1-2ND0	1-2CP3	(2) 1-2CDB (1) 1-2CD1
1-1/2 after 1963	1-2NP1	1-2ND0	1-2CP4	(3) 1-2CD3 (2) 3CD2
2-1/2 pre 1963	3NP0	(3) 3ND1	3CP3	(1) 3CD1 (2) 3CD2
2-1/2 after 1963	3NP0	(3) 3ND1	3CP4	(3) 3CD1

Numbers in parenthesis indicate number of pieces required.

MODEL	PLAIN SHEAR BLADE PART #	SERRATED SHEAR BLADE PART #	TAPERED SHEAR BLADE PART #
1/2 pre 1963	1SB3	1SB1	1SB8
1/2 after 1963	1SB3	1SB1	1SB4
1-1/2 pre 1963	2SB3	2SBU	2SB9
1-1/2 after 1963	2SB3	2SBU	2SB4
2-1/2 pre 1963	3SB3	3SB9	3SB7
2-1/2 after 1963	3SB3	3SB9	3SB7



MODEL	BARCUTTER BLADES				
	A	B	C	D	E
1/2 pre 1963	1K5A	1K5B	1K5C	1K1D	1K1E
1/2 after 1963	1K5A*	1K5B	1K5C	1K5D	not req'd
1-1/2 pre 1963	2K5A	2K5B	2K5C	2K4D	2K4E
1-1/2 after 1963	2K5A*	2K5B*	2K5C*	2K9D*	not req'd
2-1/2 pre 1963	3K9A	3K9B	3K5C	3K9D	3K9E
2-1/2 after 1963	3K5A	3K5B	3K5C	3K4D	not req'd

* Indicates that these blades are used on machines built 1963-1975. Call the sales department for information on machines built after 1975.

NOTE: Contact our sales department for availability of tooling for the "O" Buffalo Ironworker

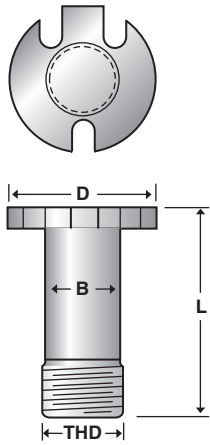
(Continued on next page)

All stock items are available for **immediate shipment.**

Non-stock sizes of a round, oblong, square, hexagonal and rectangular shape of standard tooling will be **shipped within 48 hours.**

► Model	Uses Punch	Uses Die
0	P36	D85
1/2	P66	D14
1-1/2	P66	D66
2-1/2 pre 1952	P90	D90
2-1/2 after 1952	P3T	D90

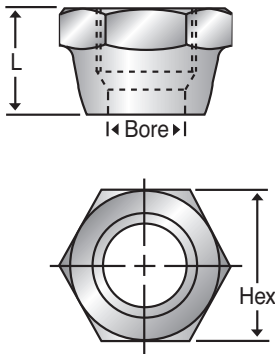
Standard Punch Stems



PUNCH STEM PART #	HEAD DIAMETER D	BODY DIMENSION B	LENGTH L	THD		FOR BUFFALO IRONWORKER MODEL
				THREAD DIAMETER	THREADS /INCH	
S90	3-1/2	1-3/8	3-7/8	1-3/8	12	1-1/2 pre 1966
S30	3-1/2	1-3/8	3-1/2	1-3/8	12	1/2 after 1966
S3T	4	1-3/4	3-3/8	1-7/8	12	2-1/2 after 1952
S42	4	1-5/8	3-3/8	1-5/8	12	2-1/2 pre 1952
S4T	3-1/2	1-3/8	4-3/4	1-3/8	12	1-1/2 after 1966
S90	3-1/2	1-3/8	3-7/8	1-3/8	12	1-1/2 pre 1963
S93	3-1/2	1-3/8	4-7/32	1-3/8	12	1-1/2 1963-6

NOTE: Contact our sales department for availability of punch stems used in triple punching attachments.

Standard Coupling Nuts



MODEL	COUPLING NUT PART #	THREAD DIAMETER	THREADS /INCH	HEX	LENGTH	BORE DIA.	TO HOLD PUNCH #
0	C7A	1-1/8	14	1-5/8	1-3/32	53/64	P36
1/2 & 1-1/2	C7B	1-3/8	12	2	1-7/32	1-5/64	P66
2-1/2 before 1952	C7D	1-5/8	12	2-3/8	1-11/32	1-13/64	P90
2-1/2 after 1952	C7E	1-7/8	12	2-1/2	1-5/16	1-33/64	P3T